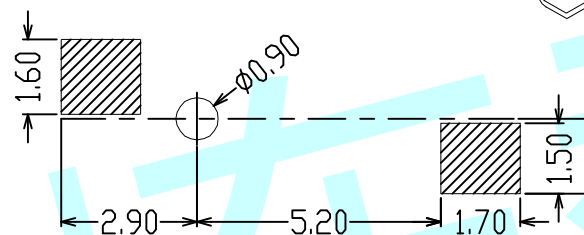
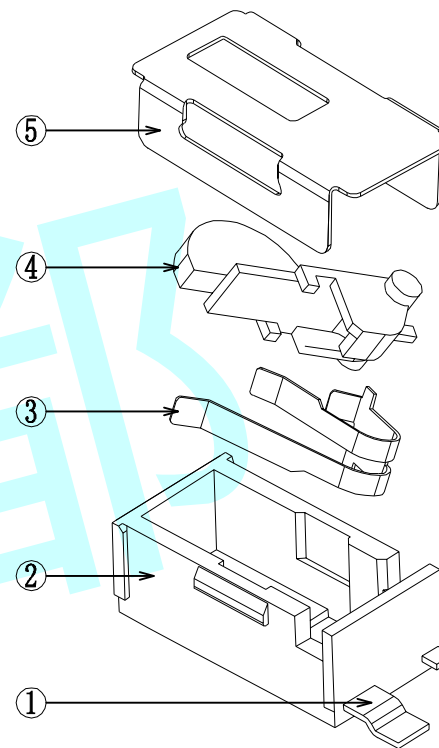
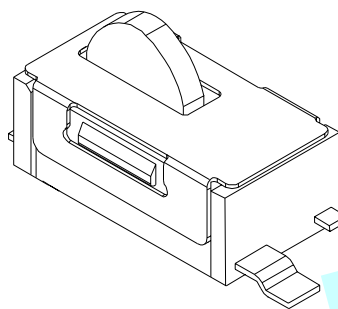
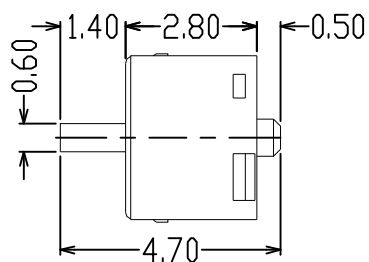
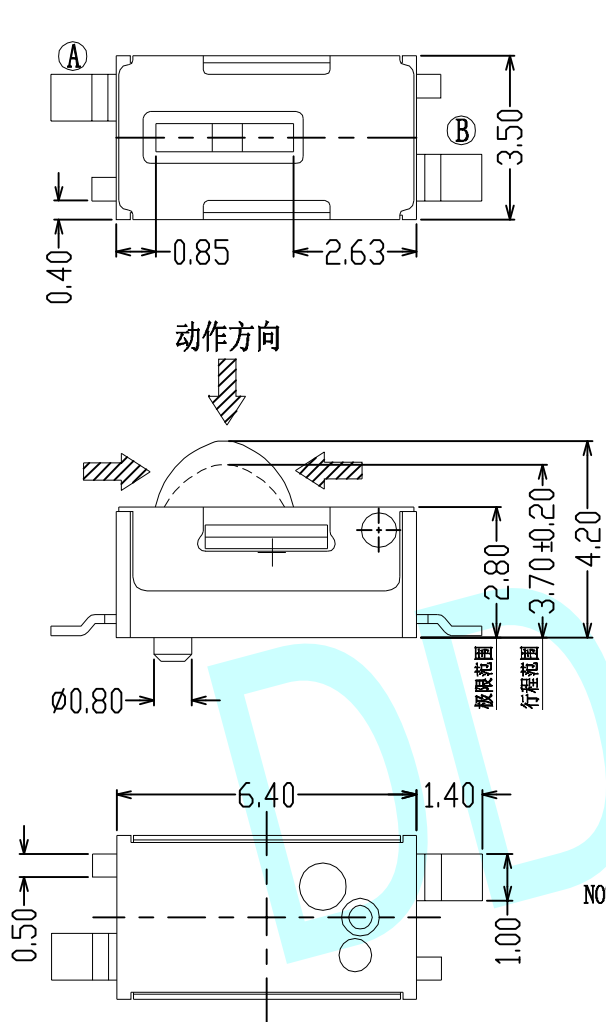
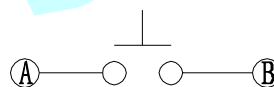


ROHS



PCB Layout



Circuit Diagram

NOTES:

1. Rating: DC 5V 0.1~1mA
2. Insulation resistance: $\geq 100M\Omega$
3. Contact resistance: $\leq 100M\Omega$
4. Voltage withstand: AC 100V 50Hz/1minute
5. Electrical lifespan: 50,000 cycles
6. Ambient temperature: $-10^{\circ} \sim +60^{\circ}$
7. Relative humidity: $40^{\circ}C \leq 95\%$
8. Travel: $0.50 \pm 0.20mm$
9. Motor power: $\leq 0.3N(31gf)$

序号	名称	数量	材料	备注
5	盖子	1	不锈钢	
4	推杆	1	PA	
3	弹片	1	磷铜	镀银
2	底座	1	PA	
1	接触脚	2	黄铜	镀银

APPROVALS		DATE	http://www.dongdudz.com	
DRAW:	ZRD	2017-12-6	TOLERANCE:	ANGLE:
CHECKED:	***	****	30 \geq	±2°
APPOVALS:	***	****	10 \sim 30	
			5 \sim 10	
			≤5	
			东都电子 DONGDU ELECTRONICS	
			MODEL: DETECTOR SWITCHES PART NO: DDU-1649-02A UNIT :mm SCALE: 1:1 REV: A PAGE: 1/2	