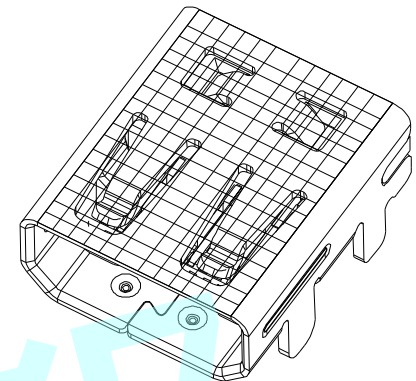
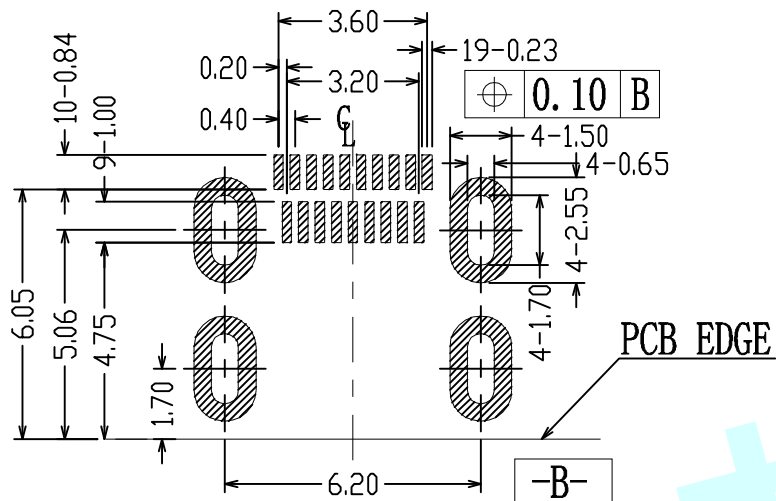
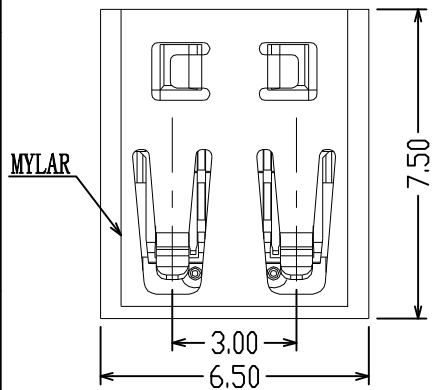
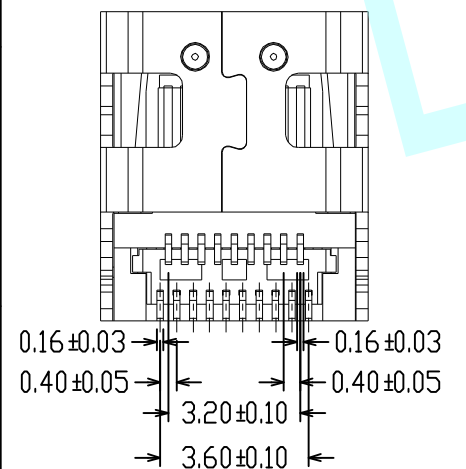
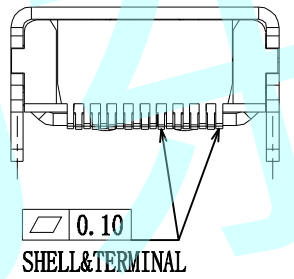
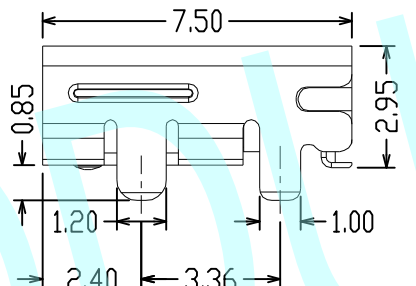
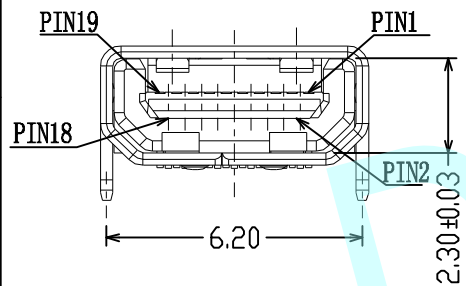


ROHS




RECOMMENDED PCB LAYOUT (.XX±0.05)
CONNECTOR SIDE (TOP VIEW)



NOTE:

- Material and finish see the table
- Mechanical characteristics
 - insertion force:44.1N MAX
 - Extroction force:5N min(after 5000 cycles 3N min), 25N max
 - Mating cycle:5000 cycles
- Electrical characteristics
 - Rating current:0.5A
 - Rating Voltage:40V
 - Contact resistance:10 millohms ohms max (Excludng conductor resistance)
 - Insulation resistance:
 - a. Unmated:100M ohms min at 500V DC
 - b. Mated:10M ohms min at 150V DC
 - Dielectric withstanding voltage:250V AC/1 minute
 - Operating teperature:-20°C~+85°C
 - Storage temperature:-20°C~+65°C

APPROVALS		DATE	http://www.dongdudz.com	
DRAW:	ZRD	2017-12-6	TOLERANCE:	ANGLE:
CHECKED:	***	***	30≥ ±0.30	±2°
APPOVALS:	***	***	10~30 ±0.20	
			5~10 ±0.15	
			≤5 ±0.10	
		 东都电子 DONGDU ELECTRONICS		MODEL: USB CONNECTOR PART NO: HDMI TYPE-2 UNIT :mm SCALE:1:1 REV: A PAGE:1/1