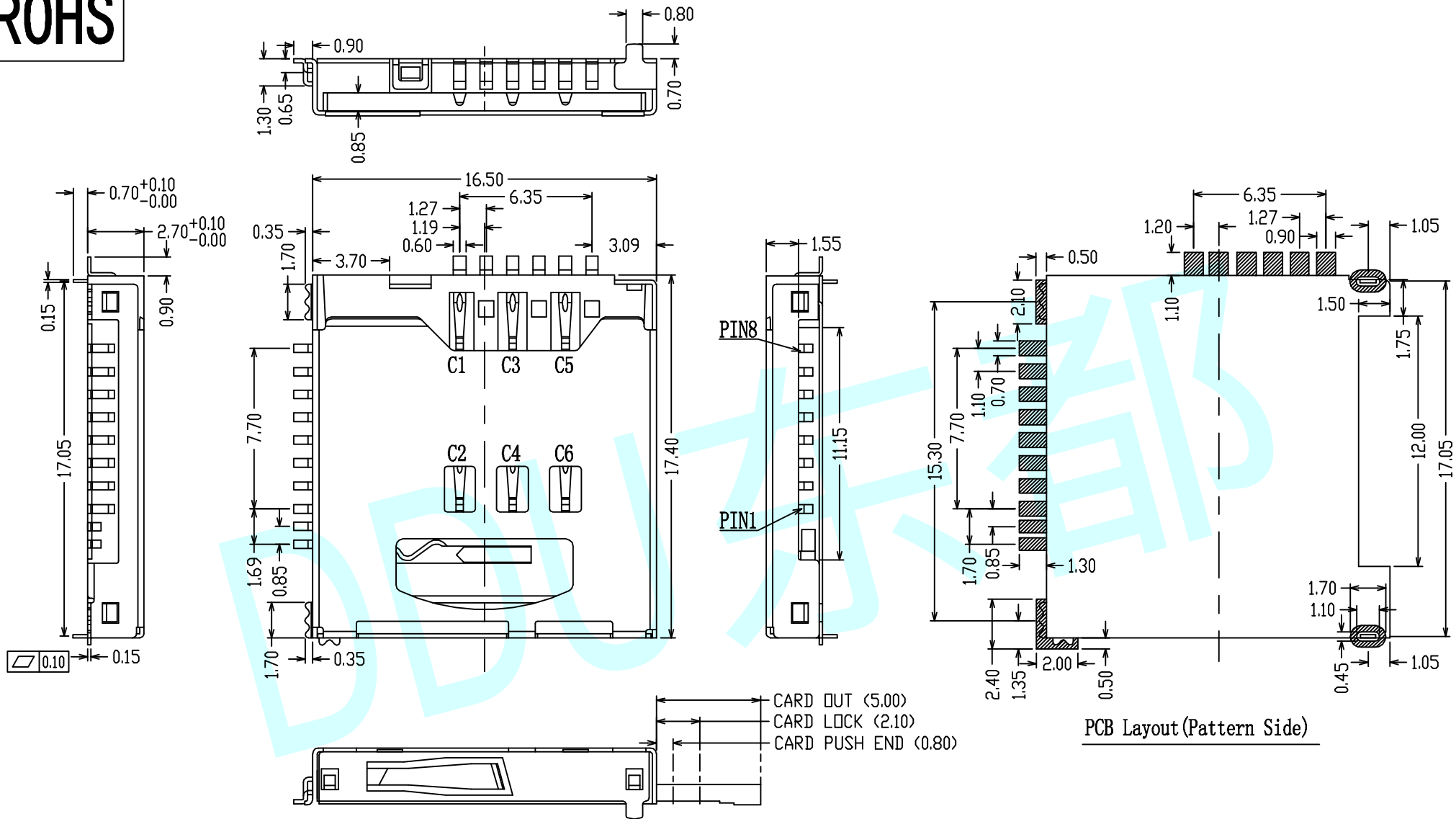


ROHS



NOTES:

1. Rating:DC 30V 1A
2. Operating Force:500±100gf
3. Mechanical Life:5,000 Cycles

APPROVALS		DATE	http://www.dongdudz.com	
DRAW:	ZRD	2017-12-6	TOLERANCE:	ANGLE:
CHECKED:	***	****	30° ≥ ±0.30	±2°
APPOVALS:	***	****	10°~30 ±0.20	
			5°~10 ±0.15	
			≤5 ±0.10	
			MODL: CASSETTE PART NO: SIM-09A UNIT :mm SCALE:1:1 REV: A PAGE:1/1	