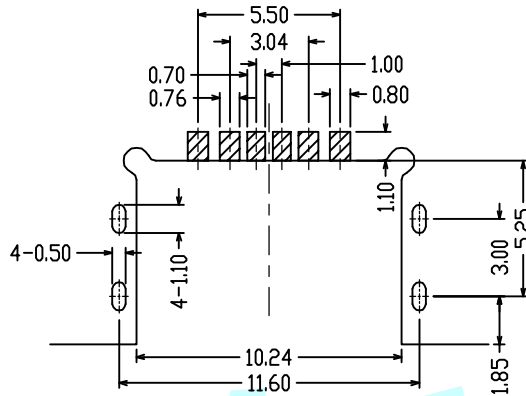
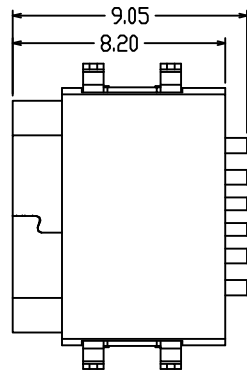
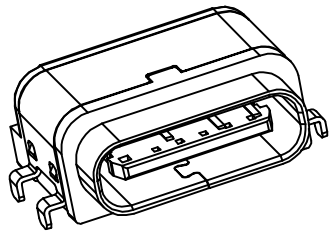
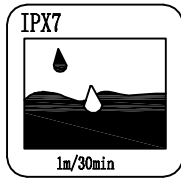


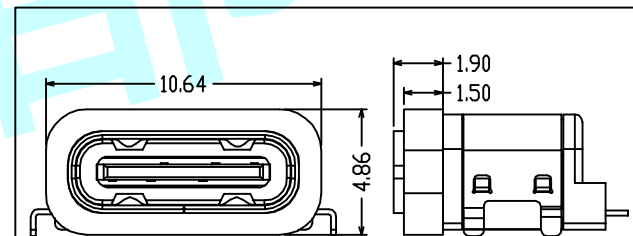
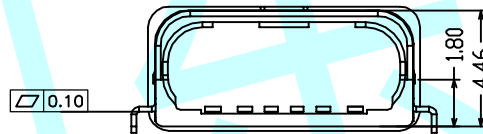
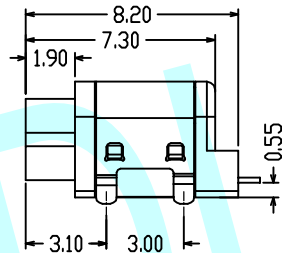
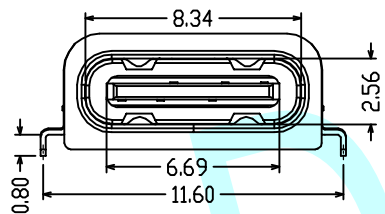
ROHS



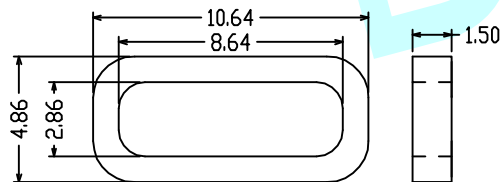
RECOMMENDED PCB LAYOUT
TOLERANCE UNSPECIFIED ±0.05mm

NOTES:

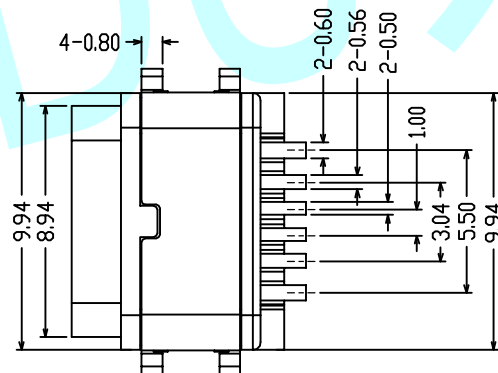
1. CURRENT RATING: 3A MAX
2. VOLTAGE: AC 100V
3. TEMPERATURE RANGE: -30°C ~ +85°C
4. CONTACT RESISTANCE: 40mΩ MAX.
5. INSULATION RESISTANCE: 100MΩ MIN
6. INSERTION FORCE: 5~20N
7. UNMATING FORCE: 8~20N
8. DURABILITY: 10,000 CYCLES
9. WATER PROOFNESS: THIS PRODUCT IS BASED ON IPX7



加防水圈示意图



建议胶圈的尺寸



NO.	DESCRIPTION	MATERIAL	REMARKS	QTY
5	SHELL	STAINLESS STEEL	NI Plated	1PCS
4	SHIELDING PLATE	STAINLESS STEEL	NI Plated	1PCS
3	CONTACT	COPPER ALLOY	TIN/Au/NI Plated	1SET
2	SHELL HOUSING	HIGH TEMPERATURE PLASTIC	BLACK	1PCS
1	HOUSING	HIGH TEMPERATURE PLASTIC	BLACK	1PCS

PIN	SIGNAL NAME	PIN	SIGNAL NAME
A5	CC1	B12	GND
A9	VBUS	B9	VBUS
A12	GND	B5	CC2

APPROVALS		DATE	http://www.dongdudz.com	
DRAW:	ZRD	2017-12-6	TOLERANCE:	ANGLE:
CHECKED:	***	****	30≥ ±0.30	±2°
APPOVALS:	***	****	10°30 ±0.20	
			5~10 ±0.15	
			≤5 ±0.10	



MODEL:	USB CONNECTOR	
PART NO:	TYPE-C-6P-4.06H-X8	
UNIT :mm	SCALE: 1:1	
REV:	A	PAGE: 1/1