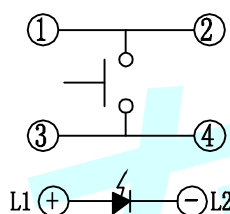
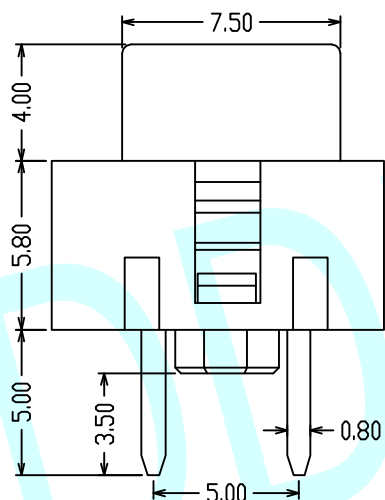
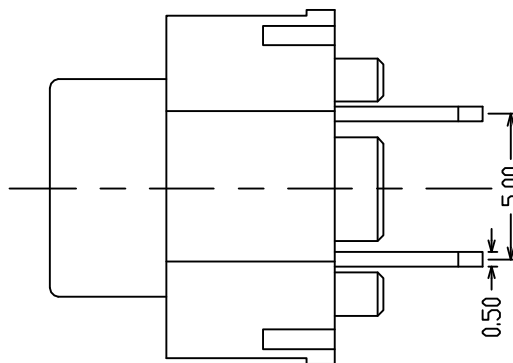
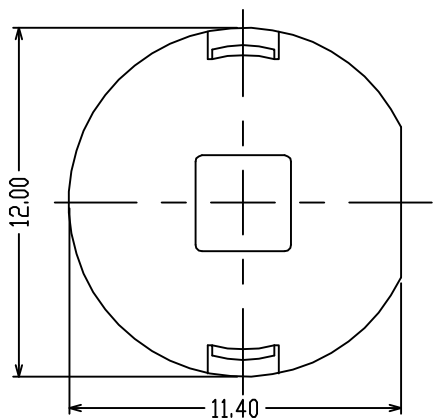
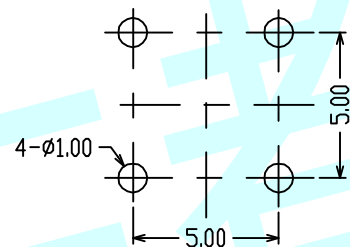


ROHS

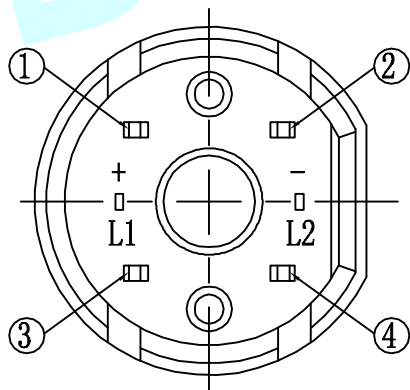


L1 (+) L2 (-)

Circuit Diagram





PCB Layout (Pattern Side)



NOTES:

1. Rating:12V DC 50mA
2. Contact Resistance:100mΩ Max
3. Insulation Resistance:250V DC FOR 1MIN
4. Dielectric Strength:250V AC(50/60HZ)FOR 1MIN
5. Life test:100,000 CYCLES
6. Operation Force:160±50g
7. Travel:0.25±0.1mm

APPROVALS		DATE	http://www.dongdudz.com	
DRAW:	ZRD	2017-12-6	TOLERANCE:	ANGLE:
CHECKED:	***	****	30°	±0.30
APPOVALS:	***	****	10°30'	±0.20
			5°10'	±0.15
			≤5	±0.10
			±2°	
				 东都电子 DONGDU ELECTRONICS
MODBL:		LED Tact Switch		
PART NO:		DDU-1550		
UNIT :mm	SCALE:1:1			
REV:	A	PAGE:1/1		