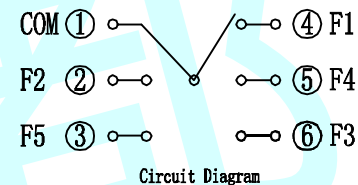
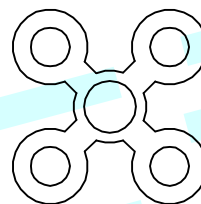
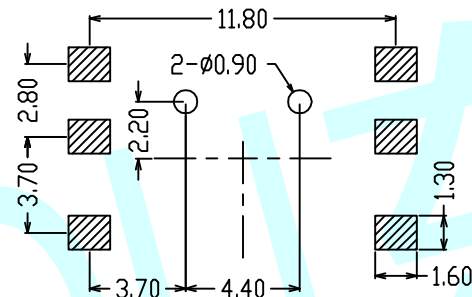
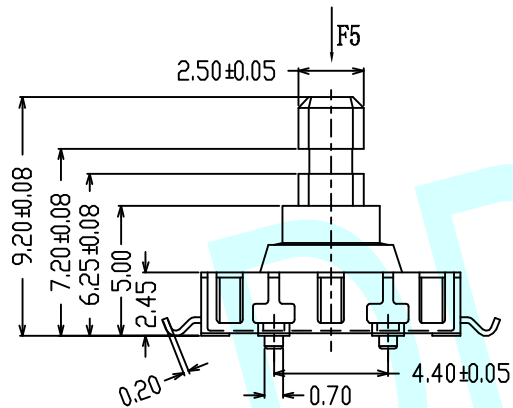
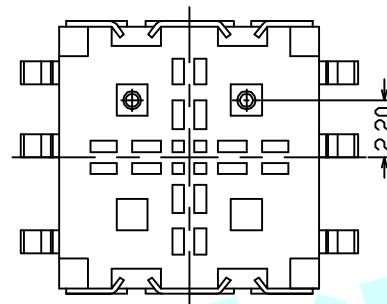
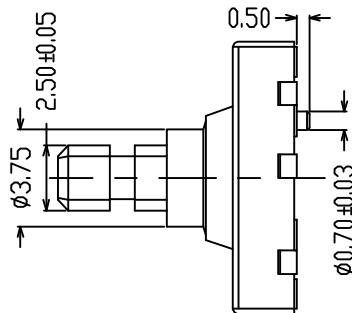
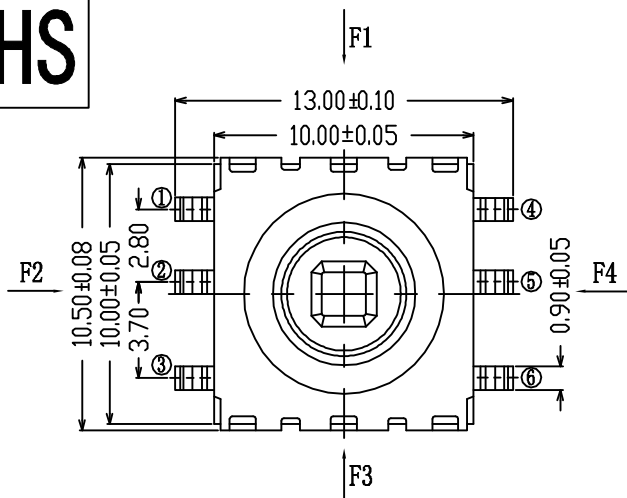


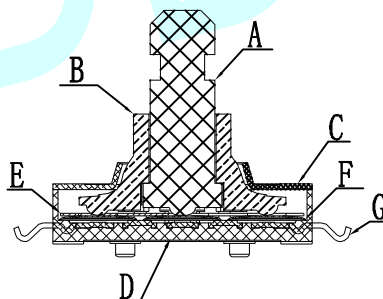
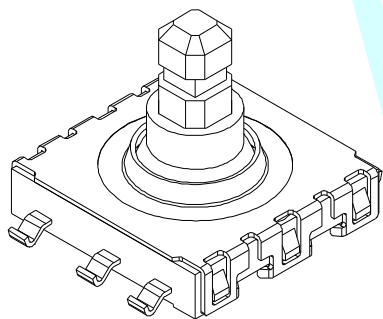
# ROHS



PCB Layout (Pattern Side)

**NOTES:**

1. Rating: DC 12V 10mA
2. Contact resistance: 100mΩ MAX
3. Insulation resistance: 100MΩ MIN
4. Service life: 50,000 cycles
5. Operating temperature: -30℃~+85℃
6. Using humidity: ≤85% RH
7. Operating power: 250±50gf
8. Travel: 0.25±0.05mm



No.	名称	数量	材料	镀涂	颜色
G	嵌件	6	磷铜	镀银	银白色
F	弹片	5	覆银不锈钢	/	银白色镀银
E	接触垫片	1	覆银铜	/	银白色镀银
D	底座	1	PA10T	/	黑色
C	盖板	1	SUS	清洗	白色
B	梅花护套	1	LCP	/	灰黑色
A	按钮	1	PA46	/	黑色

	1	2	3	4	5	6
F1	●			●		
F2	●	●				
F3	●					●
F4	●				●	
F5	●	●				

APPROVALS		DATE	http://www.dongdudz.com	
DRAW:	ZRD	2017-12-6	TOLERANCE:	ANGLE:
CHECKED:	***	****	30≥ ±0.30	±2°
APPROVALS:	***	****	10~30 ±0.20	
			5~10 ±0.15	
			≤5 ±0.10	



MODEL:	ROCKER SWITCH	
PART NO:	DDU-1222	
UNIT :mm	SCALE:1:1	⚡
REV:	A	PAGE:1/1